

Spinnaker Measurement Form

brian@greatcirclesails.com
1 617-271 0712



SECTION A - Basic information

Job number	
Sale representant	
Design provided by	
Sail Area Quoted	
Cloth split	
Material 1	
Material 2	
Measurement Rule	IRC / IMS / PHRF / ORC / None
Wave Conditions	Smooth / Medium / Rough
Wind Strength	_____ to _____ knots

Rig Type	
Boat Name	
Sail Type	
Sail Name	
Laminate	
Fibres	

SECTION B - Measurements taken on the boat.

2	Max hoist to cabin top	
ISP	Max hoist to sheerline	
13	Sheerline to waterline at mast	
14	Sheerline to cabin top	
15	Forestay / tack point to waterline	
16	End of bowsprit to waterline	

ASYMMETRICAL SPINNAKER / CODE 0 / SCREECHER
For Asymmetrical Spinnaker with furling system :
Take measurements without the furling system

MEASURED FROM MAX HOIST

1	Max hoist to tack point	
3	Max hoist to sheet point	
4	Max hoist to barberhauler	

MEASURED ON DECK

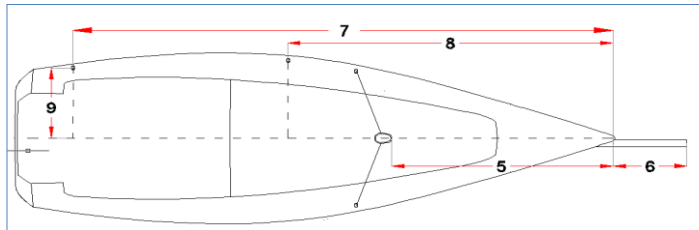
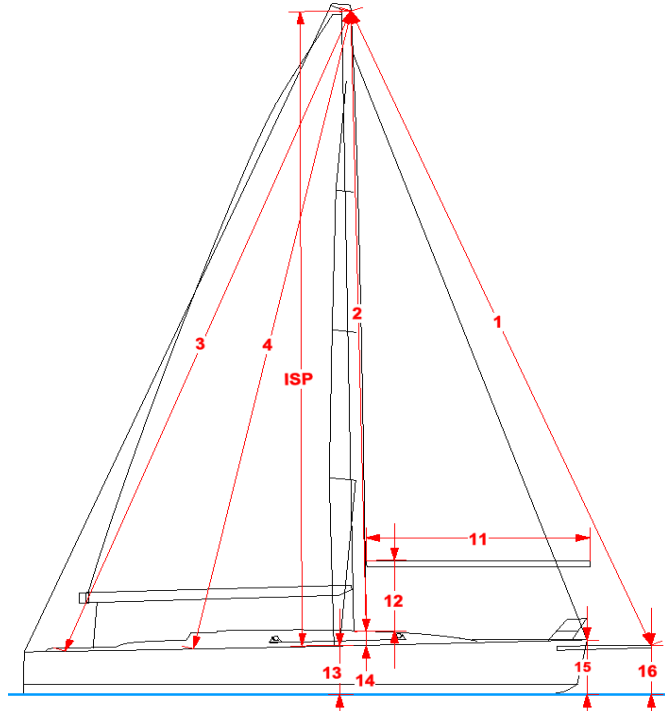
5	Measured J Dimension	
6	From forestay/deck to Spi tack block	
7	Forestay/deck to sheet point	
8	Forestay/deck to barberhauler	
9	Centerline to sheet point	
10	Bow pulpit height	

FURLING SYSTEM

	Furling system reference	
	Height of the drum	
	Height of the swivel	
	Cable length (if already done)	

SYMMETRIC SPINNAKER

11	Spinnaker pole length (Jsp)	
12	Max pole track height	



SECTION C - Sail Measurement already known

Cut Luff	
Cut Leech	
Cut Foot	
Mid girth (SHW)	

SECTION D - Complementary information about design

Spinnaker used with a snuffer	*yes or no drop down
Color 1	if exist
Color 1	if exist
Color 1	if exist

Notes about coloring (if you have a document that show the required coloring please provide on the download section)

--

--